

# *Acoustiblok Absorber Panels - Self Adhesive*

Acoustic Absorbers for Walls by Acoustiblok UK Ltd



*Acoustiblok Absorber Panels - Self Adhesive* are a high quality acoustic absorbing system with a lighter weight core and self adhesive application which makes for a simple and quick installation.

The *Acoustiblok Absorber Panels - Self Adhesive* are ideal for areas with reflective walls and ceilings to absorb the echo and reverberation in the area, offering an excellent acoustic performance. Thanks to the high technology foam base core material, the *Acoustiblok Absorber Panels - Self Adhesive* can be easily mounted to walls and ceilings to reduce the reverberation in any area. The panels are ideally used in areas such as community halls, schools, offices, village halls, class rooms, church halls and restaurants.



# Product Description

## Acoustiblok Absorber Panels - Self Adhesive

C/SfB			
	35)	Sm1	



*Acoustiblok Absorber Panels - Self Adhesive* is an open-cell foam which ensures pleasant room acoustics. Available in natural light grey colour or covered using a variety of fabric facings with a range of 63+ colours. These elements can be implemented into your projects, offering an attractive room design.

The versatility and light weight materials, *Acoustiblok Absorber Panels - Self Adhesive* can fit in with any architectural features – whether used as a ceiling panel or wall panels.

*Acoustiblok Absorber Panels - Self Adhesive* are used as wall or ceiling panels and come with a self-adhesive backing which is peeled off and bonded to the substrate. A simple and quick installation for anyone.

Standard or bespoke sizes available up to a maximum size of 2400 x 1200 with a thickness of 50mm.

For more information on Acoustiblok Acoustic products please visit [www.acoustiblok.co.uk](http://www.acoustiblok.co.uk) or telephone 01622 840289

*Advantages of Acoustiblok Absorber Panels - Self Adhesive:*

- *High sound absorption - Class A*
- *High grab self adhesive peel and stick*
- *Non fibrous*
- *Very light*
- *Flame resistance*
- *Available in 63+ standard fabric colours or natural colour light grey selection*
- *Quick lead times*
- *Ideal for DIY installations*

# Product Description / Colours

C/SfB			
	35)	Sm1	

## Acoustiblok Absorber Panels - Self Adhesive

*Acoustiblok Acoustic Panels - Self Adhesive* are manufactured from a high technology acoustic foam providing a Class A acoustic performance at 50mm thickness.

The panels are available in natural light grey colour or faced with fabric in various colours to specifically increase acoustic absorption as well as offering an alternative approach to interior design features within a room.

### Weight

- *Acoustiblok Panels* have a 9kg/m<sup>3</sup> density for the 50mm depth core.

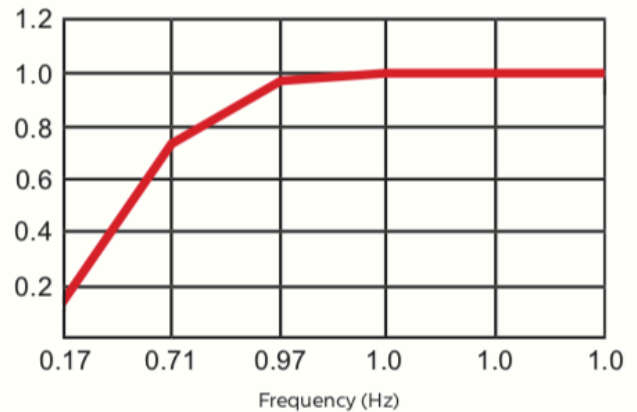
Note: All weights / densities are given as approximations.

### Fire

- *Acoustiblok Acoustic Panel* core board has been tested and offers - Class O fire rating to:
  - BS476: Part 9 and 7
  - BS 6853 Annex D.8.4
  - BS 6853 Annex B2
- Fabric facing complies with Class 1 to:
  - BS476: Part 7.
- Class O fabrics supplied on request.

### Acoustic Absorber 50mm thickness

Acoustic Performance BS EN ISO 354:2003  
Noise Reduction Coefficient 0.95 (i.e. 95%)



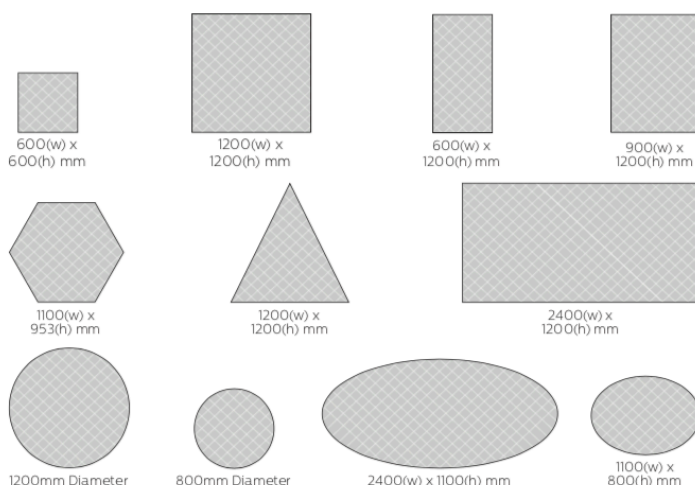
Directly fixed to wall or ceiling

### Installation

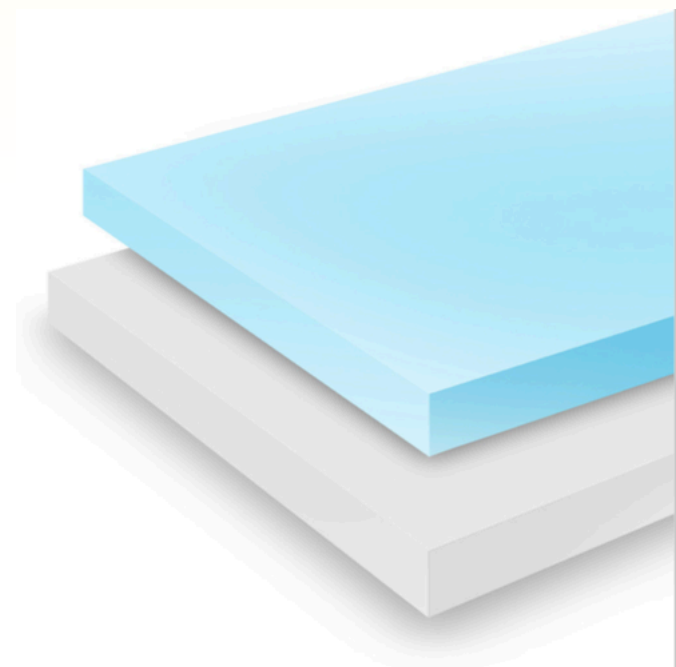
- *Acoustiblok Acoustic Panels* are easily cut with a sharp knife.
- *Acoustiblok Acoustic Panels - Self Adhesive* are easily installed with peel and stick technology.

### Cleaning

- Light dirt marks may be removed by using a proprietary carpet spot cleaner. A small area should be tested before applying to the rest of the area to ensure that the fabric is not adversely affected.



Dimension tolerance +/- 8mm



# Product Description / Colours

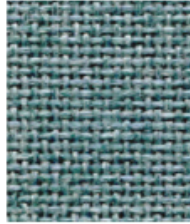
## Acoustiblok Absorber Panels - Self Adhesive

C/SfB	35)	Sm1
-------	-----	-----

### CARA FABRIC - Colour Range



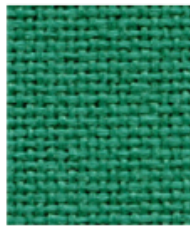
**Spray**  
EJ033



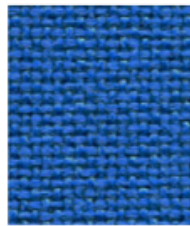
**Ronay**  
EJ189



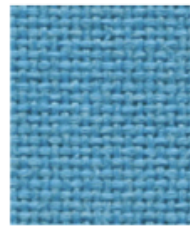
**Dolphin**  
EJ105



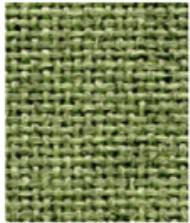
**Carron**  
EJ015



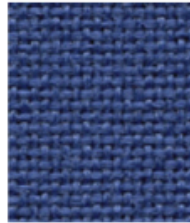
**Galilee**  
EJ125



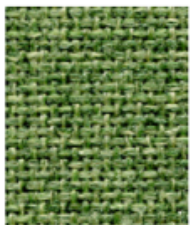
**Inverness**  
EJ175



**Fair Isle**  
EJ186



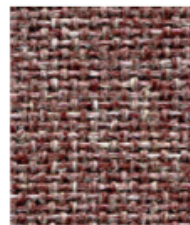
**Adriatic**  
EJ154



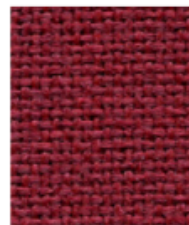
**Staffa**  
EJ185



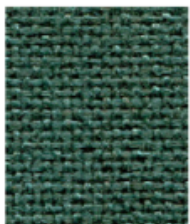
**Easdale**  
EJ188



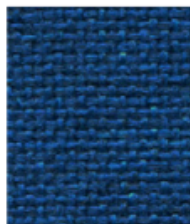
**Lossie**  
EJ197



**Tummel**  
EJ038



**Lora**  
EJ187



**Cluanie**  
EJ180



**Walten**  
EJ011



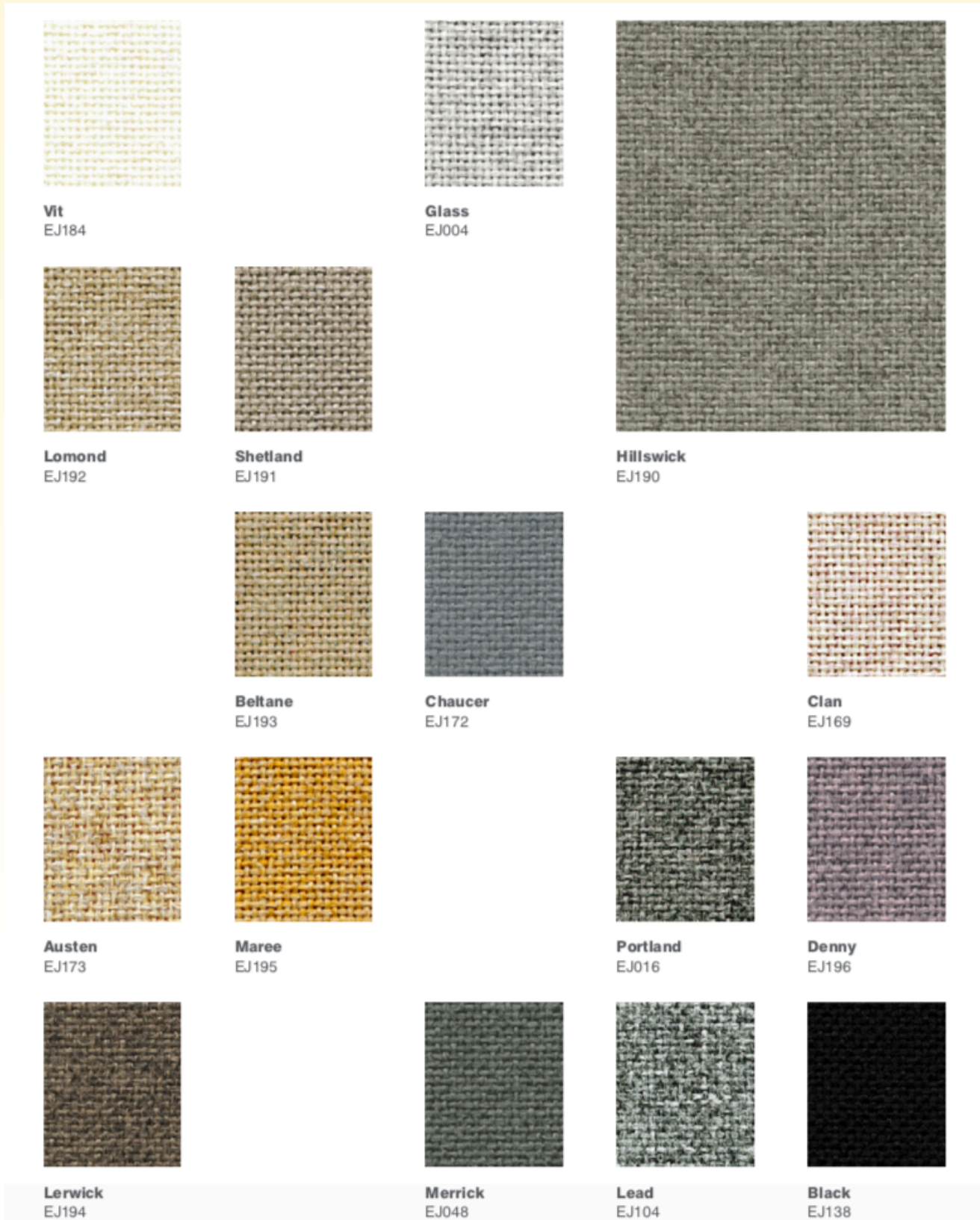
**Pitlochry**  
EJ076

Photographic fabric scans are not colour accurate. Always request actual fabric samples before ordering.

# Product Description / Colours

## Acoustiblok Absorber Panels - Self Adhesive

### CARA FABRIC - Colour Range



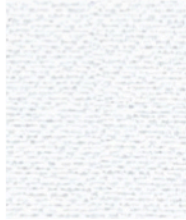
Photographic fabric scans are not colour accurate. Always request actual fabric samples before ordering.

# Product Description / Colours

## Acoustiblok Absorber Panels - Self Adhesive

CI/SfB			
	35)	Sm1	

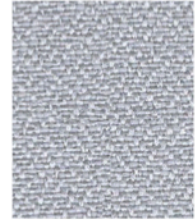
### LUCIA FABRIC - Colour Range



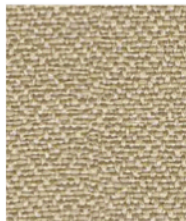
**Adobo**  
YB165



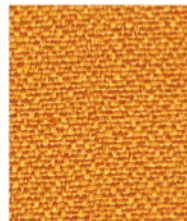
**Oyster**  
YB107



**Rum**  
YB086



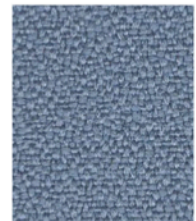
**Aruba**  
YB093



**Solano**  
YB088



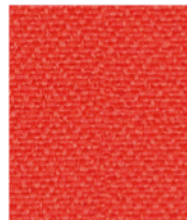
**Tequila**  
YB038



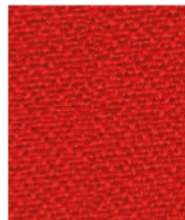
**Steel**  
YB095



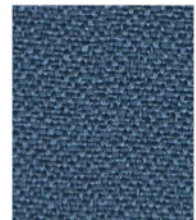
**Sandstorm**  
YB302



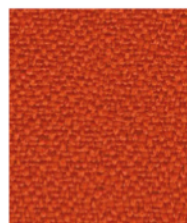
**Tortuga**  
YB168



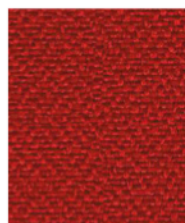
**Belize**  
YB105



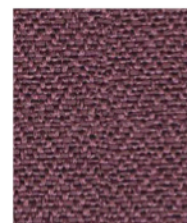
**Martinique**  
YB004



**Lobster**  
YB087



**Calypso**  
YB106



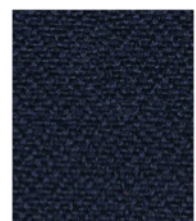
**Bridgetown**  
YB102



**Sombbrero**  
YB046



**Tarot**  
YB090



**Costa**  
YB026

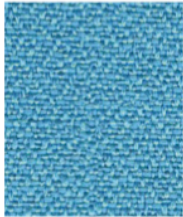
Photographic fabric scans are not colour accurate. Always request actual fabric samples before ordering.

# Product Description / Colours

## Acoustiblok Absorber Panels - Self Adhesive

C/SfB			
	35)	Sm1	

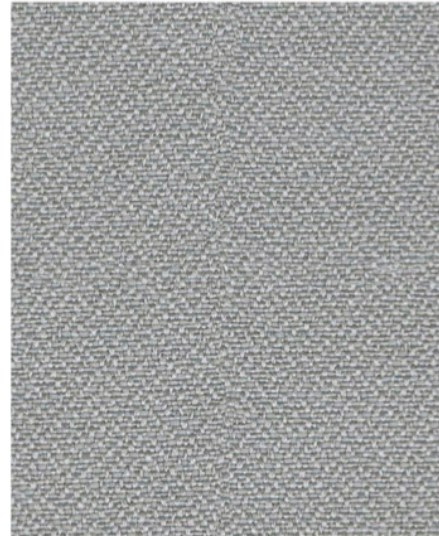
### LUCIA FABRIC - Colour Range



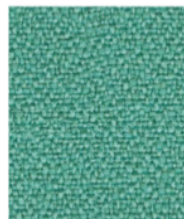
**Marianna**  
YB157



**Madura**  
YB156



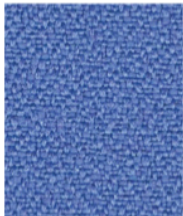
**Slip**  
YB094



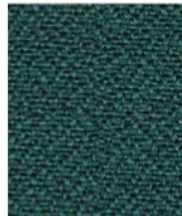
**Campeche**  
YB301



**Apple**  
YB096



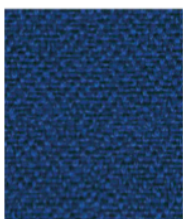
**Bluebell**  
YB097



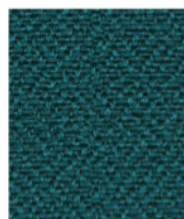
**Windjammer**  
YB047



**Buru**  
YB170



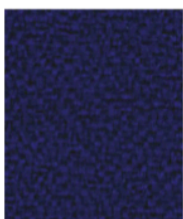
**Scuba**  
YB089



**Montserrat**  
YB011



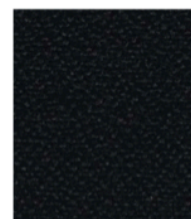
**Blizzard**  
YB108



**Ocean**  
YB100



**Paseo**  
YB019



**Havana**  
YB009

Photographic fabric scans are not colour accurate. Always request actual fabric samples before ordering.

# Product Installation

C/SfB			
	35)	Sm1	

## Acoustiblok Absorber Panels - Self Adhesive

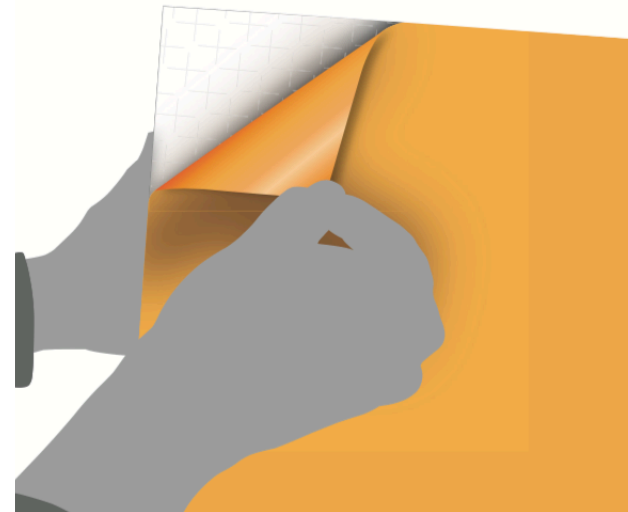
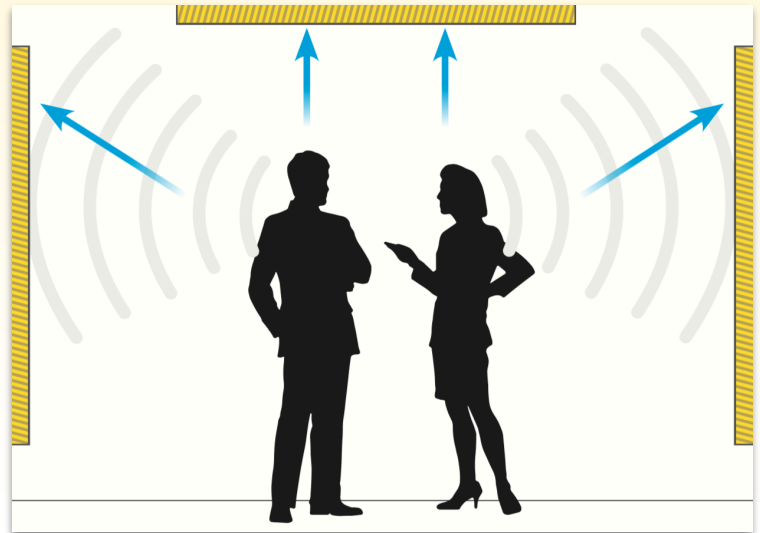
### Installation

The panels must be handled with clean hands or with clean gloves to avoid marks to the panels. Ensure all wall surfaces to which the panel will be applied to are clean and dry.

Panels can be fixed to most surfaces including concrete, plasterboard and block work providing they are solid. Wallpaper should be removed. Emulsion paint brushed with a stiff brush. The surface to which the panels are applied must have no cold bridging and must be damp free fully. Any signs of condensation or dampness on the surfaces of the wall and ceilings must be covered and eliminated before applying the panels.

The surface must be 100% flat to make sure the panels are fixed securely. The panels have a peel off paper to the back which must be taken off and the panels must be immediately applied to the surface to ensure good adhesion is made. The panels must be positioned at the correct location and then pressed to make sure a good bond is made. *Acoustiblok Acoustic Panels* should not be used at low level walls due to panels being possibly damaged. The ideal location when installation is carried out is on ceilings or above door height level when installed on walls.

It is highly recommended that a test adhesion is done first before installing all panels. A minimum of 60mm gap should be left between each wall or ceiling panel. The panels should be installed at room temperature between 5°C and 22°C. It is recommended that the panels must be acclimatised for at least 2 days before any installation is carried out to make sure there is no movement in sizes of the panels.



Wall installation: Peel & Stick



Ceiling installation: Peel & Stick

Note: Acoustiblok UK Ltd will not accept any liability for the loss or damage that may occur of any kind which is outside of our control. We strongly instruct to make sure the product suitability is confirmed by doing your own tests. Panels MUST be checked for colour shading differences, flaws, defects or damage at point of delivery /arrival.

For more information on Acoustiblok Acoustic products please visit [www.acoustiblok.co.uk](http://www.acoustiblok.co.uk) or telephone 01622 840289